

THE KAMVALETHU FOUNDATION

ANNUAL REPORT | 2024 - 2025



kamvalethu

Our Future

CONTENTS

PAGE 1.	CHAIRMAN'S REPORT AND THEORY OF CHANGE
2.	THE HATCH FOUNDATION (FIRST THOUSAND DAYS)
3.	THE OTTO FOUNDATION (LITERACY DEVELOPMENT)
4.	BULUNGULA INCUBATOR (PRECONCEPTION TO CAREER)
5.	IKHAYA LABANTWANA MONTESSORI (ECD)
6.	NCINCI ONE'S MONTESSORI AND ZITHULELE MONTESSORI (ECD)
7.	NGOKO MONTESSORI (ECD)
8.	AXIUM EDUCATION (LITERACY AND NUMERACY DEVELOPMENT)
9.	IMPACT SUMMARY AND FINANCES
10.	FINANCES

CHAIRMAN'S REPORT

As I sit to write this report in June of 2025, the Eastern Cape has been hit by deadly storms with almost 100 people dead, and thousands left vulnerable because of the destructive flooding. In 2023, I visited the location of a school near Coffee Bay, also in the Eastern Cape, which had been entirely swept away in one night from a devastating flood due to intense rainfall. This is a timely reminder that not only do the most vulnerable have to deal with the challenges of poverty, but they often bear the brunt of extreme changes in the climate which they had no part in creating.

If this were not enough, there has also been a disturbing rise in violent crime in many of the areas in which our Project Partners

practise. Despite these challenges, our Project Partners in the Eastern Cape soldier on to ensure that the thousands of children and families with whom they partner continue to thrive.

Closer to Kamvalethu's home in Cape Town, our Project Partners face similar (like crime), but also different challenges. The biggest challenge is the rapid rate of urbanisation, driven mostly by the availability of employment, education, and services in Cape Town. However, the city is struggling to match that need for services and education with the extra 85 000 people who move to the city annually, according to the World Population Review, mostly ending up in informal settlements.

Financially speaking, we had a fantastic 38,5% increase in revenue from FY2024,

while our operational expenses remained almost the same. This gave us a surplus for the year – having run at a loss last year – which not only means that we have more to distribute to beneficiaries (we increased our distributions by 16%), but also improves our longer-term sustainability. This is all due to our business partners, who enable Kamvalethu both financially, and through in-kind donations of time and expertise.

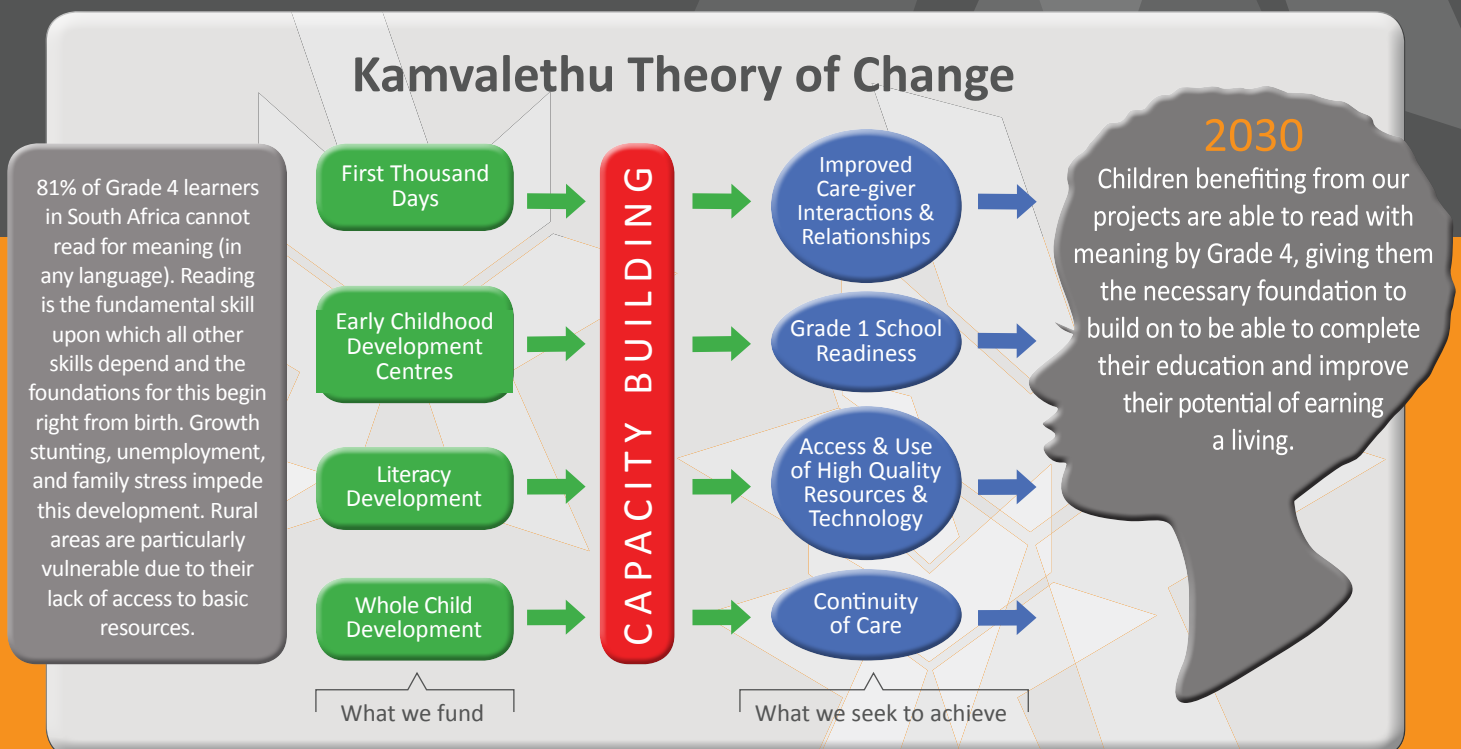
To improve our sustainability, Kamvalethu is launching a UK funding arm, with the intention of connecting with South Africans living in the UK. Hopefully by the time the next annual report rolls around, we will see the fruit of this strategy.

While we acknowledge that statistics don't tell the full story, when you read this report, you will be struck by the sheer number of people in the Eastern Cape and in Cape Town who are impacted by the work of our Project Partners. Kamvalethu, and its business partners, are privileged to be able to join hands with them.

Finally, on behalf of the board of trustees, I want to acknowledge our indefatigable Programme Director, Jenni-Kate Warwick. Her industry and passion for our Projects is unmatched, as she invests deeply into their lives and work.

Rowan Haarhoff CHAIRMAN
B.A. LLB (UCT), B.Th. (UP), Lic.Th. (CTBS)

Kamvalethu Theory of Change





How it started



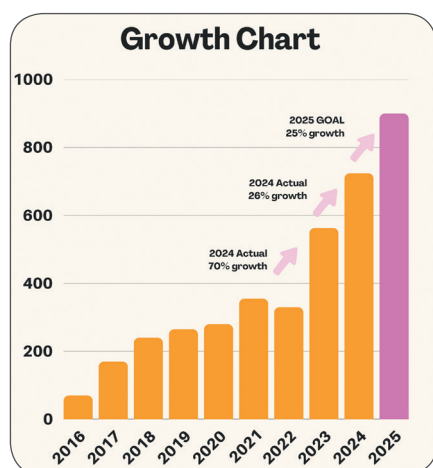
How it's going

THE HATCH FOUNDATION

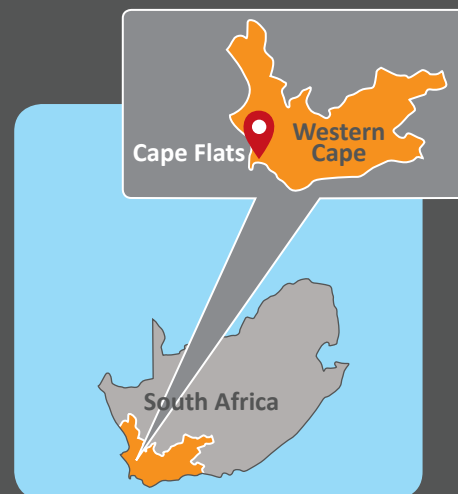
Hatch has been delivering newborn essentials to new moms in under-served communities in the Western Cape since 2015. Our goal is to help mothers feel supported and for babies to be well cared for in the earliest and most impactful days of life. We first partnered with Kamvalethu in 2023 and this has allowed us to grow and reach more mothers and babies. In 2024, we received more donations than ever before! This enabled us to scale our distribution and we delivered 724 Hatch

bags (up 25% from 2023). We also rented a storage unit, freeing up our homes again after 9 years, supported a picnic for post-partum moms who'd completed a Flourish antenatal course, and included leaflets on the importance of reading, in our bags. With the joy of growth comes added workload! Our goal is to keep growth manageable and sustainable while we work on new systems and processes to manage our increased distribution. We are looking forward to continuing our upward growth, with another 25% more bags on track for delivery in 2025. Big thank you to Kamvalethu for your unwavering support!

Jacqui Barhouch, Hatch Foundation



Sister Chantel Badenhuizen from Groote Schuur Maternity ward said, "I just can't say how much it means to our patients. Just the look in their eyes when they see this gift—I think it really, really means so much for them. A lot of them didn't even know they were pregnant, some of them haven't got the means to prepare for this pregnancy. So just a big thank you to everybody that is working on this project and that is contributing to it. It really, it means a lot to our patients and to us."



Newborn with giraffe



Reading together at the Rainbow Library



There is an adventure in every book!



So many options to choose from at the Protea Library

THE OTTO FOUNDATION

The Otto Foundation network of libraries is growing. We celebrated the opening of our 8th school library in March 2025. We will open our 10th library before the end of the year. The consistent support we receive from the Kamvalethu Foundation – for both the creation of new school libraries and the operational costs of our existing libraries and library programmes – continues to be an important anchor for our organisation. Reading builds children's vocabulary, improves their ability to communicate, and helps them understand the world around them. It also strengthens their imagination and creativity. It is especially important for kids to read books that reflect their own experiences, cultures, and identities. When children see themselves in stories, they feel valued and understood, and it builds their confidence and sense of belonging. At the same time, reading about different people and experiences teaches empathy and broadens their understanding of the world.

Simply put, reading gives kids a great start in life, and our libraries and library programmes lay this foundation at under-resourced schools in Cape Town. With a growing network of libraries, our family of stakeholders (including school management teams, teachers and funding partners) is growing. Relationships that could be held organically when we had one library, have necessarily had to adapt now that we operate across multiple

school campuses. We have had to become very deliberate about how we maintain continuous feedback on the reading culture in our schools and the implementation of the library programmes. Regular structured engagement with our stakeholders, alongside a bi-annual reading culture survey, helps us to stay connected with our school communities, and to keep learning and improving.

In 2025, our library programme is prioritising the creation of opportunities to encourage social engagement around books. We know that so-called 'book talk' or 'informal book chat' can play an important role in creating motivated readers. Our team is trying various practical tools to promote 'book talk' this year – including prompts for at-home conversations at the end of every library session, and opportunities for learners to write short book recommendations that are displayed on their favourite books. We are already seeing how this creates a buzz around certain titles in the library, and book-themed conversations between learners. **Frouwien Bosman, The Otto Foundation**

"The Sunshine library has had an incredible ripple effect throughout the primary school classes. The children cannot wait for their library lesson each week and view it as a happy, safe space where their newfound love of books is catered for. Teachers have noticed an improvement in vocabulary and a renewed interest in reading as well as a different attitude towards caring for books. Acquisition of language is a big challenge that oral Deaf learners face, and being able



to immerse themselves in this beautiful space filled with words is a gift to be truly treasured."

Marina Paioni, Educator, Seven Steps Academy for the Deaf

"I love our school library because it's like a magic place where I can go on adventures in books. Stories make me dream big!" (Grade 7 learner)



Sunshine Library - Learners

IMPACT



2 913
learners with access to Otto Foundation libraries



22 785
books in the catalogues of Otto Foundation libraries in December 2024



48 167
books were checked out of Otto Foundation libraries in 2024



521
learners from five schools participated in our 2024 Pen Pal project



5 399
book reviews were completed in our quarterly book review competitions



256
curriculum-aligned primary school library lessons now available for free download on our website

BULUNGULA INCUBATOR

The Bulungula Incubator (BI) is a place-based organisation that works to sustainably end poverty in the Xhosa Mouth Administrative Area of the Eastern Cape. Kamvaletu has been a committed funding partner of the Bulungula Incubator since 2017. Initially, their support was focused on our Early Childhood Development (ECD) programme, and in 2022, they began funding our full “Preconception to Career” model. This holistic approach acknowledges that there is no single solution to breaking the cycle of poverty. Rather than pursuing scale through breadth, we focus on depth and scope, working responsively to our community’s needs.

One of our most significant achievements this year has been the launch of the Wild Coast Early Childhood Development (ECD) Community of Practice (CoP), co-created with the Kamvaletu Foundation. The CoP, established in April 2024 alongside regional partners—Jabulani Rural Health Foundation, Sustainable Coffee Bay, Educare Mpame, and Layita Foundation—has grown into a vibrant quarterly workshop series. It brings together ECD practitioners from over 20 schools to participate in collaborative learning, problem-solving, and skills-sharing, thereby strengthening the ECD sector across the Wild Coast.

In 2024, our community experienced an unusual and distressing rise in criminal activity. A few violent incidents involving three senior managers and one security guard posed emotional and operational challenges. Several team members worked remotely for extended periods, and the psychological impact on our close-knit staff and community was profound. Despite these incidents, our programmes remained fully operational and achieved all intended outcomes for 2024.



Jujurha ECD Centre, one of five ECD centres run by Bulungula Incubator



As we approach our 18th year of operations, we reflect on how far we have come since our initial projects to secure water tanks and rebuild a collapsed school. The Bulungula Incubator is now recognised nationally and globally as a model for sustainable rural development. We are particularly excited about the growing number of programme alumni who are now in tertiary education. Our first group of high school graduates is currently in their third year of university. We look forward to welcoming these young professionals back into our organisation and community—a powerful example of long-term impact and intergenerational transformation.

Sigrid Kite Banks, Bulungula Incubator



Minister of Basic Education (at the time), Angie Motshekga, visited our organisation to see our ‘Preconception to Career’ model



Community health worker conducting breastfeeding training with pregnant mother during routine home visit

“Children love Jujurha (preschool) because they play with others, learn new things and games, and enjoy many toys. One parent shared: ‘My child gets a good foundation there. I’ve noticed they are brighter and speak more clearly after attending Jujurha.’”
Jujurha Parent

168

children enrolled at five Early Childhood Development (ECD) centres (ages 3–6)

191

children (ages 0–3) received two ECD@ home sessions and one growth monitoring visit per month by community health worker “Nomakhaya”

100%

antenatal and postnatal home-visit coverage on track by community health workers

1 300

primary school learners received two additional maths and literacy sessions per week through the iiTablet Tshomiz programme

98%

matric pass rate at Bulungula College in 2024

40

youth enrolled in our Job Skills and Entrepreneurship Programme experience

2

hot cooked meals per day per learner at five ECD centres, and Bulungula College

IMPACT

THE KAMVALETHU FOUNDATION ANNUAL REPORT

2024 - 25

4

IKHAYA LABANTWANA (SUSTAINABLE COFFEE BAY)

Sustainable Coffee Bay (SCB), through its flagship early childhood development (ECD) initiative, Ikhaya Labantwana Montessori (ILM), remains committed to transforming the lives of children in the Tshezi community. We do this by providing high-quality early childhood education comparable to that of affluent communities. Since 2010, ILM has served as a beacon of hope in the Coffee Bay area, with over 250 children graduating and gaining a solid educational foundation.

Our mission extends beyond classroom learning—we empower parents by providing them with the tools, knowledge, and support to advocate for better education and accountability in their communities. SCB also collaborates with local stakeholders, enhancing access to education, skills, and employment opportunities that align with Kamvaletu's broader goal of fostering community-driven systemic change.

In 2024, we marked several significant milestones that reflect our mission's impact. The reopening of the main bridge in Coffee Bay, which had been destroyed during the devastating February 2023 floods, was a collective triumph for the community. For ILM, this reconstruction meant restored uninterrupted access for children and teachers, boosting school

attendance and enabling us to continue our work effectively.

We proudly completed the construction of a ramp and retaining wall at Ikhaya Labantwana, enabling us to enrol children with special needs and disabilities. This achievement reflects our belief that quality education should be accessible to every child, regardless of their physical abilities.

Our efforts to deepen parental involvement paid off in 2024, with 81 home visits and 130 group sessions conducted across neighbouring villages, including Jonga, Ngoko, Mathozokazini, Rhini, Bhakaleni, Dunga, and Mapuzi. Through these interactions, we fostered stronger relationships between parents and educators, creating a supportive ecosystem for learners.

One of our most pressing challenges in 2024 was managing a larger cohort of 62 learners, exceeding the recommended maximum of 60 children for ILM. This



Celebrating Maria Montessori on her birthday



decision was necessary to balance our 3-year cycle, given the lower graduation numbers in 2022.

We are eager to expand the ECD-in-the-Home Program in collaboration with the DG Murray Trust ECD Program in 2025. This initiative leverages home facilitators to provide individualised support to parents and caregivers, extending ILM's impact beyond the classroom.

Sustainable Coffee Bay (SCB) remains unwavering in its mission to transform rural communities through education, empowerment, and collaboration. In 2024, we have made remarkable strides in improving early childhood development programs, strengthening partnerships, and empowering parents and educators to become champions of change.

Sihle Gili, Sustainable Coffee Bay

"The program has had a profound impact. We were unaware that children also learn effectively at home, especially during structured sessions where parents facilitate the process. It has taught us the importance of bonding time with our children, and we've realized that during these moments, our children can also teach us valuable lessons."

Aviwe Kulelezweni, Parent from Ikhaya Labantwana Montessori (translated from isiXhosa)

IMPACT



62
children enrolled



26 000
nutritious meals provided throughout the year



361
children in the area dewormed and supplemented with Vitamin A



20
pairs of school shoes and 15 school bags donated to children transitioning from ILM



81
home visits and 130 parent support group sessions conducted across 7 villages



8
training events attended by ILM teaching staff, reinforcing knowledge and classroom practices



2
Community of Practice (CoP) Workshops: 2 workshops hosted, fostering knowledge-sharing and best practices among ECD educators

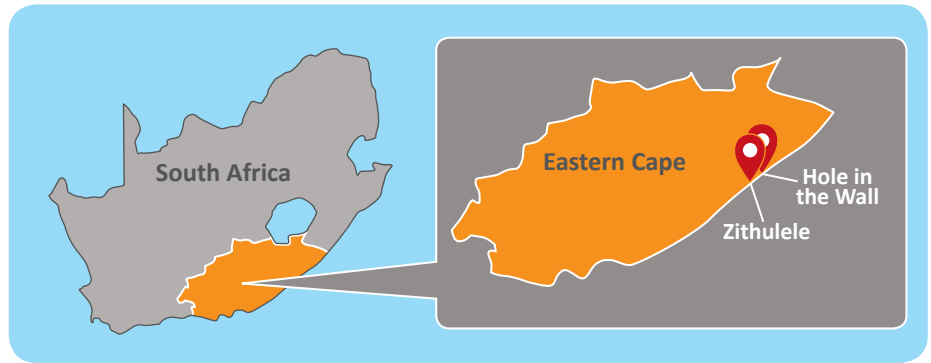
NCINCI ONE'S MONTESSORI

Ncinci One's Montessori is based at Hole in the Wall and we provide Montessori education for young Xhosa children during their critical years. We provide a prepared environment for the children in which they are able to develop themselves and build solid educational foundations in early learning areas. Kamvalethu's funds in 2024 supported the salaries of the main drivers of the school, as well as the nutrition for the children.

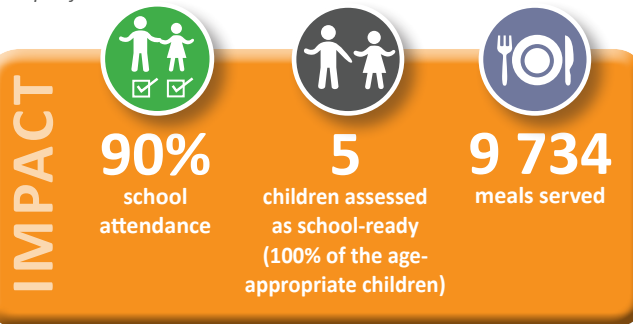
Our two local Directresses finished their studies and are now qualified with an ECD NQF Level 5. Their studies started in 2018 and these women developed great resilience during this period.

Trying to find an English speaking 'teacher' to join the team was a huge challenge, as nobody wants to move to Hole in the Wall due to the high crime rate.

Luyolokazi has applied to DBE for the government subsidy and has submitted all documents. We are praying that they will support us, as they have verbally stated. Fingers crossed. I am really proud of how the local ladies are managing and operating the school since I have left the area.
Dawn Brochenin, Ncinci One's Montessori



Our 2 Directresses have graduated and are now qualified



Concentrating hard!

ZITHULELE MONTESSORI (JABULANI)

Jabulani runs projects in health, the environment, livelihoods development, and early childhood development, including our Zithulele Preschool, supported by Kamvalethu. In 2024, all assessed children were ready for Grade R, and all 3–4-year-olds were developmentally on track. Insights from the Kamvalethu and ELOM assessments identified key growth areas, leading to the decision to recruit a Preschool Mentor for 2025. During the year, school attendance reached 75%, professional development for teachers included 22 in-house peer-led sessions, 4 Montessori workshops, and 3 Wild Coast Community of Practice forums. Teachers also invested in parental understanding of ECD through delivery of 4 workshops.

Cath Young, Jabulani Rural Health Foundation

Quote from a parent:

"I really appreciate you for allowing him to come to your school...my wish is for other children to be helped...It's sad for children with neurodevelopmental disabilities because centres to help them are scarce and educational opportunities are limited for them, especially in the rural areas."



Story time with Teacher Lydia



Outdoor play



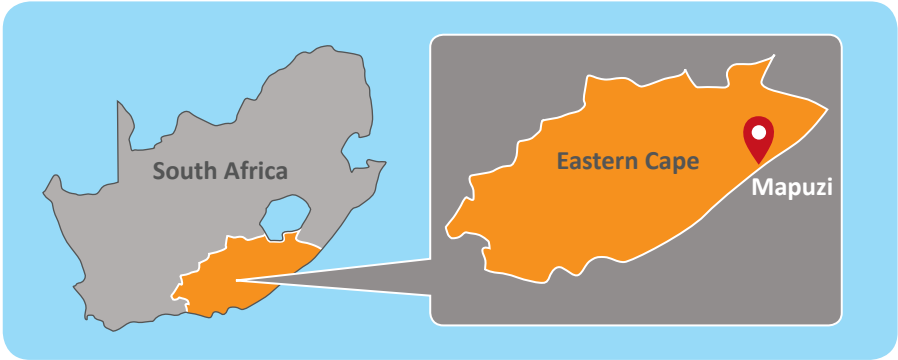
The children received their own books from Book Dash

NGOKO MONTESSORI

Ngoko Montessori operates in the village of Mapuzi in the Eastern Cape. In 2024 we accommodated 35 Xhosa children aged 2,5 to 6, with 2 practitioners. Our practitioners attend 2 staff meetings a month to find ways to improve teaching and learning. We strive to give our learners quality education.

2024 was a very exciting year for us as we could welcome 27 new learners to our school thanks to sponsors who renovated our school. We also had volunteers teaching children new educational games that boosted their confidence. Eight of our learners were assessed as school-ready and are doing well in Grade 1.

I attended the SAMA Conference last year. It was a good conference, and I learnt a lot. It is a challenge for our learners to attend school during rainy days due to bad roads



getting to school. Our parents use bakkies that transport our children to school.

One jungle gym was a problem with so many learners, but thanks to our government subsidy, we could purchase more educational toys. As principal of our school, I am looking forward to expanding our outdoor learning with new equipment as a result of our ECD subsidy. This year we want to start a sensory garden. Children

must explore different textures of leaves and engage with nature. This year we are taking children outside with refuse bags to pick up litter. It teaches them to look after the environment.

Nomaphuzi Mtyana, Ngoko Montessori



Practising our gross motor skills

IMPACT

35
children
enrolled

4
parent workshops
held and regular
engagement with
parents

9 660
nutritious meals
served

we have
a thriving
vegetable garden
where we
can pick fresh
vegetables daily



Learning together

From a mama..

"I wish this school will grow more and more. My child graduated from Ngoko Montessori last year and went to grade one. He was selected to participate in a Xhosa spelling competition in Mthatha and won. Thank you to Ngoko Montessori."



Early numeracy is fun!

AXIUM EDUCATION

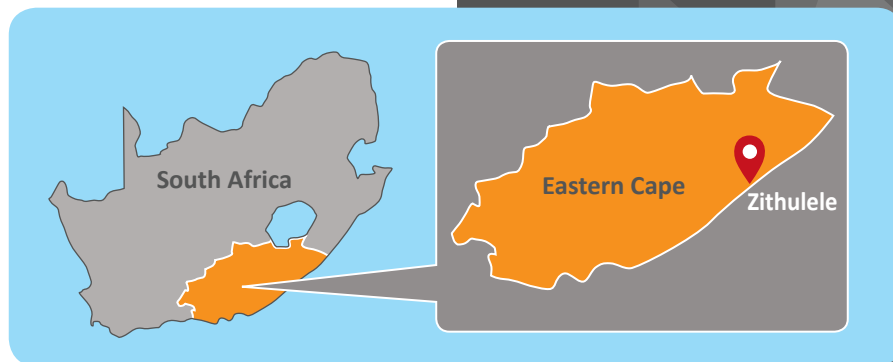
The Nobalisa Programme of Axiom Education tackles three major challenges in South Africa: high unemployment, low literacy rates, and a growing teacher shortage. It trains young people from rural communities to deliver structured isiXhosa language lessons to 4300 learners in Grades R-3. Using the Teaching at the Right Level (TaRL) approach, these 60-minute lessons take place twice a week in 33 rural schools in the Eastern Cape. Lessons incorporate government literacy resources alongside tailored TaRL lesson plans.

In 2024, we expanded to 12 new Nobalisa schools, including four in partnership with Bulungula, and added Ngcwanguba JSS as a Public School Partnerships (PSP) school. Our first conference, along with Teaching at the Right Level Communities of Practice (CoPs) and PSP collaborations, has strengthened our ability to share our work more widely.

As we look to 2026 and beyond, we are increasingly focusing on expanding our influence beyond direct implementation. Rather than only being an “Operator at scale,” we are exploring ways to become an “Influencer at scale”—sharing our learning, strengthening partnerships, and advocating on behalf of rural schools. This will help ensure that the impact of Nobalisa reaches beyond the schools we directly support.

Axiom’s mission to strengthen literacy in rural Eastern Cape has taken a major step forward with the expansion of the Nobalisa programme to Mqanduli Road (MQR). With seven schools now onboard across two clusters, this milestone isn’t just about numbers, it’s about deepening impact where it matters most.

In 2025, we are on track to take on two new PSP schools and 17 new Nobalisa schools. There is some risk attached to the latter in that the government stipends we are relying on to cover the bulk of staffing costs have been delayed with uncertain timeframes. As mitigation, we are building these stipends into our budgets for the



A group of the new Nobalisa Facilitators being inducted by their team leader

year, and have approached funders to cover this uncertainty. A significant feature of our plans is the Pilot Study (a precursor to a potential Randomized Control Trial) that will be conducted at the new Nobalisa schools (with a group of control schools) that should provide us with “proof of concept” for future advocacy.

Nonhlanhla Mahlobisa, Axiom Education

Nosipho Waqu reflects on her first year as the Nobalisa Project Manager, highlighting the impact of the Nobalisa literacy club festivals:

“In my first year as the Nobalisa Project Manager, attending the literacy club festivals at our two sites was an inspiring and unforgettable experience. These festivals are a culmination of the year’s work by the children and youth, ranging from as young as four to 18 years old, who



Aerial view of Zithulele where it all started for Axiom

participate in our Nobalisa afternoon clubs. The clubs offer a safe and accessible space close to their homes and schools, where participants come together after school to engage with reading for pleasure. Beyond reading, these clubs allow the children to explore poetry, singing, dancing, and drama, fostering creativity and providing a meaningful escape from daily challenges. The festivals themselves are a vibrant celebration of this journey, showcasing the incredible talent, discipline, and enthusiasm of the young attendees. Witnessing these young individuals perform with such passion and precision was deeply moving—not only because of the joy they displayed but also because of the profound impact the facilitators, including male role models, have had on them.”

IMPACT



7 000
children engaged



41
schools reached



2 690
additional hours of maths and numeracy through the numeracy clubs



5 733
hours of targeted isiXhosa literacy lessons



165 902
biscuits munched at afterschool programmes



5 000
books passed through learners hands

IMPACT SUMMARY



8

project
partners



6

business
partners

11 006 beneficiaries impacted in the following ways:



724

new moms
received a
Hatch bag for
their newborn



319

children were
educated in
a quality ECD
centre



50

ECD practitioners
were upskilled
through the Wild
Coast Montessori
Hub and the
Wild Coast ECD
Community of
Practice



7 000

children engaged
with educational
support through
Axiom



2 913

children with
access to Otto
Foundation
Libraries



48 167

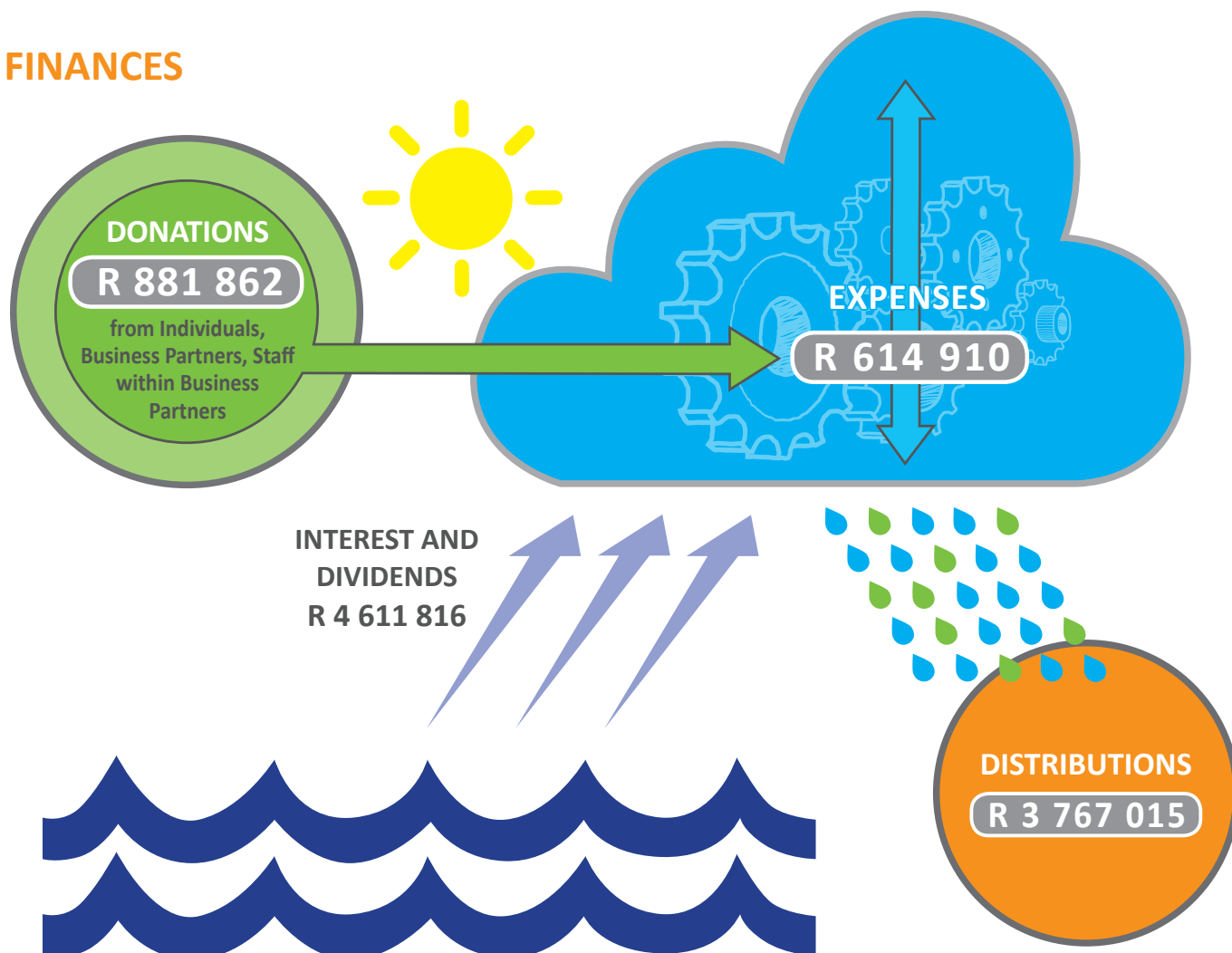
books were
checked out at
Otto Foundation
Libraries



122 000

meals were
served to
beneficiaries
of our partners
(conservative
estimate)

FINANCES



		FY2025	FY2024	ANNUAL FINANCIAL STATEMENT NOTES
IN	Donations Received	R 881 862	R 447 374	
	Dividends and Interest Earned	R 4 611 816	R 3 520 447	Dividends increased
	TOTAL	R 5 493 678	R 3 967 821	38,5% increase
OUT	Expenses Paid	R 614 910	R 613 575	0,22% increase
	Out of the Ordinary	-	R 595 830	
	Distributions Made	R 3 767 015	R 3 230 800	16,6% increase

FINANCIALS

The Kamvalethu Foundation Trust (Registration Number IT1928/2013)

For the 12 months ended 28 February 2025

INCOME		
Donations Received: Individuals	R 67 251	
Donations Received: Business	R 813 000	
Donations Received: MySchool	R 1 611	
Dividends Received: Business	R 4 110 000	
Other Income	-	
Interest Received	R 501 816	
Total Income	R 5 493 678	
OPERATING EXPENSES		
Accounting, Bank, Legal and Management Fees	R 140 358	
Employee Costs (including payroll, salaries and training)	R 347 218	
Out of the Ordinary (investment write-off)	-	
Office Expenses	-	
Donations (Mandela Day Project)	R 57 051	
Marketing and Events	R 19 950	
Development Costs	R 48 235	
Entertainment	R 2 096	
TOTAL OPERATING EXPENSES	R 614 910	
OPERATING PROFIT	R 4 878 768	
NON-OPERATING EXPENSES		
Distributions to Beneficiaries	R 3 767 015	
Net Profit	R 1 111 753	
<i>The above is based on Audited Financial Statements</i>		

THANK YOU TO OUR PARTNERS

We are honoured to partner with incredible businesses and the passionate individuals behind them. You are an essential part of the Kamvalethu Foundation, and we value both your financial support and your generosity of spirit over the past year.

A big thank you to Lynne Snell for her help with proofreading this report, and to the Kamvalethu Board for consistently putting the needs of our beneficiaries first.

Lastly, a heartfelt thank you to our amazing Project Partners. Your passion, commitment, and perseverance in the face of ongoing challenges continue to inspire us every day.



kamvalethu
Our Future

Office On The Beach, 3 Lagoon Beach Drive, Milnerton, Cape Town, 7441
Office: 021 551 4609 | Email: partner@kamvalethu.org | kamvalethu.org



scan to donate