



# kamvalethu

"Our Future"



The Kamvalethu  
Foundation  
**Annual Report**  
**2022 - 2023**



## CONTENTS

CHAIRMAN'S REPORT

FIRST THOUSAND DAYS

ECD PRESCHOOL CENTRES

LITERACY DEVELOPMENT

FINANCIAL REPORT

THANK YOU



Protea - Grade 6 Reading Journey

## CHAIRMAN'S REPORT

I am writing having recently returned from a trip to the Eastern Cape, to introduce our new Programme Director, Jenni-Kate Warwick (Jakes), to our Project Partners. The trip was significant, not only in so far as Jakes seeing firsthand the amazing work that our Project Partners are doing, but also the state of this very rural part of the Eastern Cape following some of the worst storms in living memory.

We witnessed the rubble of what was once a high school for 1200 children, totally washed away so that only the foundations remained. A steel bridge that connected Bulungula to Coffee Bay was swept from its moorings and tossed on the banks of the river. Such was the type of devastation these communities experienced during those disastrous few days at the beginning of 2023. All this amid what are already

very challenging conditions to live and work in. I'm grateful to report that Kamvalethu was able to provide some funds for disaster relief.

Returning to Jakes, our new Programme Director, who joined us in January this year. She is a qualified social worker with a Master's Degree, and has worked in various settings that make her imminently qualified to see us through the next season of development. Welcome Jakes, we know you are going to make a significant contribution, judging from what you have already achieved in the short time that you have been with us.

Reflecting on what is written in this report, there are two key themes that I would like to highlight. They are both intertwined, one is lurking in the background and the other is clear for all to see. The hidden theme is that these communities cannot rely on government to deliver

many of their basic social, educational, infrastructural and health needs. However, what you will read amongst these pages are of communities taking ownership of their own lives and destinies, and getting things done despite the challenges, which seem to be innumerable.

This seems to me to be indicative of what South Africa needs in order to be a successful nation, a people who are not going to wait on the powers that be to ensure prosperity, but are going to create and take their own opportunities.

We are grateful that Kamvalethu has had another strong financial year as a result of the hard-working people from our Business Partners, and we count it our privilege to be able to contribute in some small way to the wonderful work of our Project Partners.

**Rowan Haarhoff** CHAIRMAN  
B.A. LLB (UCT), B.Th. (UP), Lic.Th.(CTBS)



Jujurha ECD Grade R Graduation Celebration

## FIRST THOUSAND DAYS



The Bulungula Incubator (BI) is situated in the Eastern Cape, about 35km south of Coffee Bay, as the crow flies. Its goal is to sustainably end poverty in a generation, while enriching community life and enhancing community cohesiveness, with programmes in place from pre-conception to career. Kamvalethu partners with BI to enable its outcomes-based Early Childhood Development (ECD@Home) programme.

We know that the first 1,000 days of life are essential for optimum health and development across a person's lifetime. BI's ECD programme starts with ECD@Home, where their Nomakhayas (community health workers) visit homesteads to provide education to children aged 0 - 3, alongside their parents and caregivers. Primarily aimed at supporting and educating caregivers about the stimulation needs of small children, these home visits also enable assessment of maternal and child health, as well as providing education about nutrition. Children then attend one of the five ECD centres, where they receive quality education, adequate nutrition, and bi-annual health screenings. BI hosts two annual outreach moments, during which it provides vitamin A supplements, deworming and growth monitoring to all the children at its preschools.

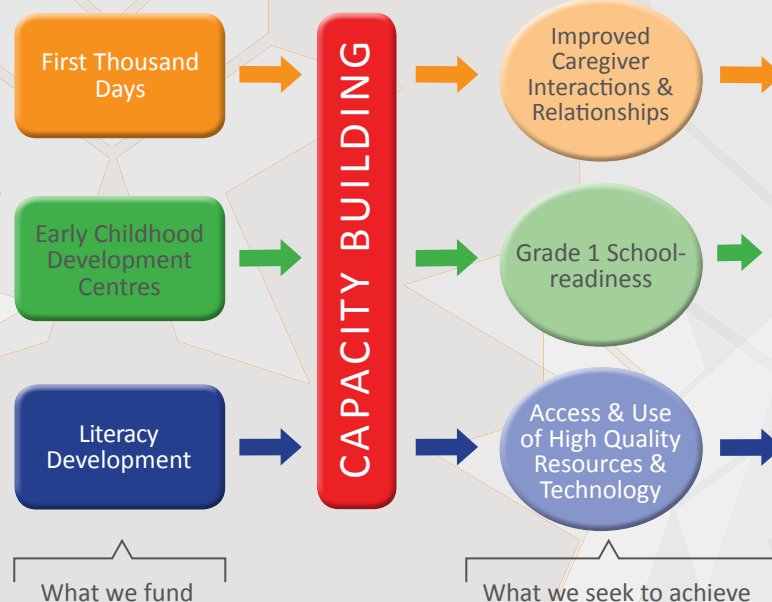
**IMPACT**

**3717**  
ECD@  
Home visits  
conducted

**257**  
families  
visited by 20  
community  
health workers

## Kamvalethu Theory of Change

78% of Grade 4 learners in South Africa cannot read for meaning (in any language). Reading is the fundamental skill upon which all other skills depend and the foundations for this begin right from birth. Growth stunting, unemployment, and family stress impede this development. Rural areas are particularly vulnerable due to their lack of access to basic resources.



Jujurha ECD Grade R Graduation



# THE WILD COAST HUB (FIRST CHILDREN)



The Wild Coast Hub is a collaboration between Kamvaletu, First Children and the preschool centres. It aims to bring the 4 grassroots Montessori preschools on the Wild Coast together. It facilitates ongoing learning through teacher workshops, one-on-one mentoring of school staff, as well as the provision of Montessori materials and general funding.

The Wild Coast Hub had a good year in 2022, despite one of the schools needing to leave the group. The remaining 4 schools were supported by means of regular visits by the Programme Mentor and Community Activator and 8 professional development workshops were held

for practitioners and staff. The topics covered included: The Prepared Environment, Health and Hygiene, Golden Beads Group Operations, Let's Make our Practical Life Area REAL, Language Enrichment, Introduction to Permaculture, Observation Skills and Handcrafts.

The Wild Coast Hub also hosted 16 interactive parent workshops. Those who attended really enjoyed this learning time together and the sense of community was felt by all. The topics of the workshops were: What is Montessori and How You, the Parent, Can Help Your Child at Home, Health and Hygiene, Keeping Your Children Safe and Positive Parenting.



First Children

All 4 schools in the hub have Montessori students working at them. In the not-too-distant future, several of the students will be stepping into leadership positions at some of the schools, therefore, completing their qualification is important. During 2022, The Wild Coast Hub was able to provide 36 half-day and 10 full-day training sessions.



Teachers Attending the SAMA Conference



Parent Workshop at Ncinci One's



Teachers Observation Workshop



## IKHAYA LABANTWANA MONTESSORI (ILM)

2022 was a return to normal following two disrupted years. ILM had 20 new learners starting the year, bringing the total number of learners to 60. The dedication and efforts of the teachers, parents and learners have ensured a smooth school year at Ikhaya Labantwana Montessori. The partnership with First Children helps with the continued professional development of the teachers, ensuring that they are able to provide high quality Montessori early education for the impoverished community in and around Coffee Bay.

### IMPACT:

- 80% attendance by learners during the year
- 10 of the 11 Grade R learners graduated at the end of the year
- All eligible children have started primary school in 2023



ILM Graduation 2022

## ZITHULELE



Learning About Rubbish and Recycling

The school received training from First Children via the Wild Coast Hub, as well as from an external Montessori consultant. The head teacher received 16 private mentoring sessions through the year. For the teachers, the highlight of the year was that improving relationships with parents has led to a good working relationship and better attendance of children at school.

### IMPACT:

- 5 parent meetings and workshops conducted
- 28 children attend classes at the school
- 12/12 children assessed as school-ready



Making Paper Mache

## NCINCI ONE'S MONTESSORI

Ncinci One's Montessori is run by 4 local women in Mxotyeni village, Hole in the Wall, on the Wild Coast. It accommodates 30 children aged 2.5 - 6 years, and the children attending the preschool come from three different villages. Ncinci One's Montessori had a very positive year in 2022. It is encouraging to see that the school is meeting its goal of helping rural children to build solid literacy and numeracy foundations, as was seen by the December report cards of ex-Ncinci One's in Grades 1, 2, 3 and 4 at the local school. During 2022, Luyolokazi and Nosandise attended Montessori training sessions and Professional Development Workshops, which have proven to be especially useful for them in their daily practice and in life.



### IMPACT:

- 4 parent workshops held
- 90% school attendance by the children
- 10630 meals served
- 12 children eligible for Grade 1 assessed as school-ready
- Book Dash distributor - distributed 3000 Xhosa childrens' storybooks
- Permaculture garden started



Early Numeracy in Action



Learning to Write my Sounds

## NGOKO MONTESSORI

Ngoko Montessori is run by 4 local women in Ngoko village, Mapuzi, on the Wild Coast, and accommodates 30 children aged 2.5 - 6 years. The children attending the school come from 5 different villages. This year, the school was able to establish a permaculture garden, enabling it to grow its own vegetables. Through sponsorship from First Children, Ngoko Montessori is now able to provide the children with 2 nutritious meals and a calcium/vitamin C supplement, daily. The head of school, Nomapuzi, started carrying out home visits and found these most beneficial, as they grew her understanding of the children in her care.

### IMPACT:

- 7 children assessed as school-ready
- 75% school attendance by the children
- Permaculture garden started



Grading Colours



New Permaculture Veggie Garden for Ngoko



New Murals on the Walls



LITERACY  
DEVELOPMENT

AXIUM EDUCATION

Axium Education (est. 2009) is based in two rural villages, Zithulele and Jingqi, in the Eastern Cape. From an educational perspective, they are located in one of the country's worst performing provinces, in parts of the former Transkei homeland that continue to be characterised by deep rural poverty. Axium Education's vision is to see every rural child leave school with purpose, agency and options, and its mission is to

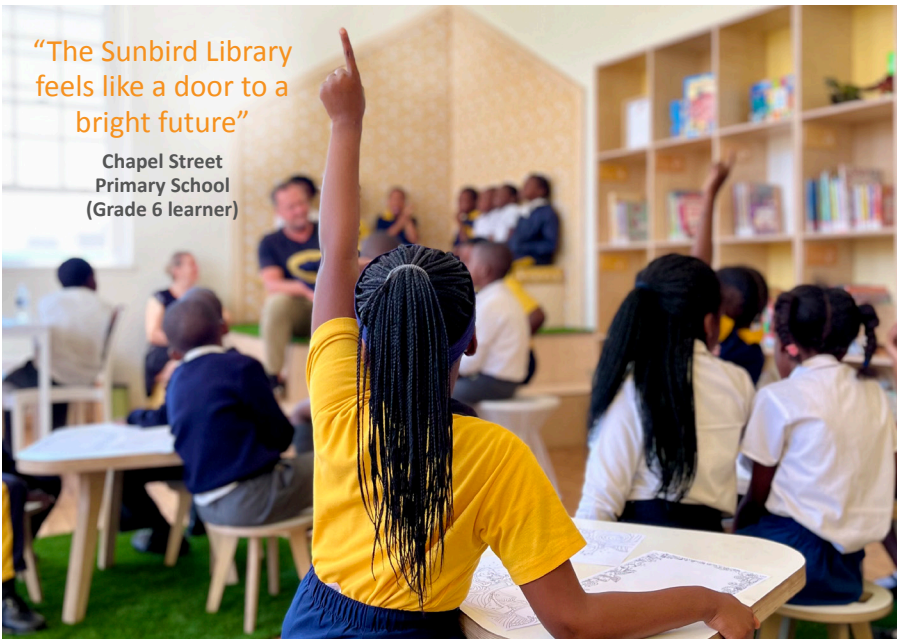


raise student achievement in rural South African communities.

This year, Axium Education marks 14 years of working with schools in the rural Eastern Cape. Over 200 Axium alumni have accessed tertiary studies at universities or colleges across the country, with many returning to work as professionals in the communities it serves.

Kamvalethu is involved in co-funding Axium Education's Nobalisa ('storyteller') programme, which runs TaRL (Teaching at

the Right Level) small-group programmes in foundation phase classrooms, as well as after-school groups in the community, with the aim of increasing childrens' love of reading, numbers and learning. Through the Nobalisa programme, Axium Education now reaches nearly 2000 students, adding 8 hours per week of high-quality literacy instruction at 16 schools, while employing 90 community-based staff in the process.



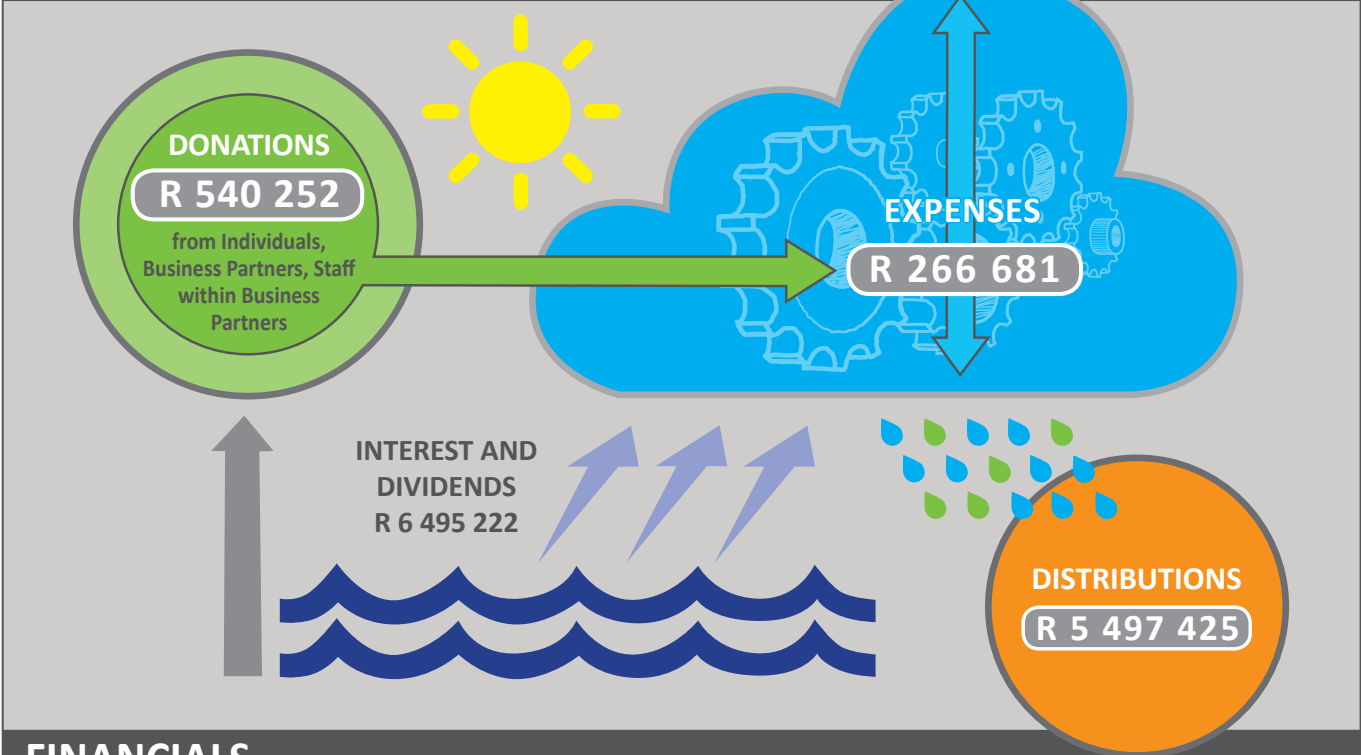
Sunbird Library Author Reading



Puppet Show at the Liyabona Library



		FY 2023	FY 2022	NOTE
IN	Donations received	R 540 252	R 483 891	
	Dividends and interest earned	R 6 495 222	R 4 909 462	
	<b>TOTAL</b>	<b>R 7 035 474</b>	<b>R 5 393 353</b>	<b>30% increase</b>
OUT	Expenses paid	R 266 681	R 88 047	203% increase
	Distributions made	R 5 497 425	R 4 290 100	28% increase



FINANCIALS

The Kamvalethu Foundation Trust (Registration Number IT1928/2013)

For the 12 months ended 28 February 2023

<b>INCOME</b>	
Donations Received: Individuals	R 19 650
Donations Received: Business	R 519 650
Donations Received: MySchool	R 952
Dividends Received: Business	R 6 111 600
Interest Received	R 383 622
<b>Total Income</b>	<b>R 7 035 474</b>
<b>OPERATING EXPENSES</b>	
Accounting, Bank, Legal and Management Fees	R 213 675
Employee Costs (including payroll, salaries and training)	R 37 936
Office Expenses	R -
Marketing and Events	R 7 392
Resources	R 5 794
Entertainment	R 1 884
<b>TOTAL OPERATING EXPENSES</b>	<b>R 266 681</b>
<b>OPERATING PROFIT</b>	<b>R 6 768 793</b>
<b>NON-OPERATING EXPENSES</b>	
Distributions to Beneficiaries	R 5 497 425
<b>Net Profit</b>	<b>R 1 271 368</b>

The above is based on unaudited figures

## THANK YOU TO OUR PARTNERS

It is our privilege to partner with amazing businesses and the individuals who work for them. We consider you to be an integral part of The Kamvalethu Foundation. We appreciate not only your financial contribution, but your generosity of spirit and support over the past year. Thank you to Lynne Snell for assisting us with the proofreading and to the Kamvalethu Board for always having the beneficiaries' best interests at heart. Finally, a big thank you to our awesome Project Partners, without whom none of this would be possible! Your passion, dedication and determination inspire us!



Office On The Beach, 3 Lagoon Beach Drive, Milnerton, Cape Town, 7441  
Office: 021 551 4609 | Email: [partner@kamvalethu.org](mailto:partner@kamvalethu.org) | [kamvalethu.org](http://kamvalethu.org)