



kamvalethu

"Our Future"

CONTENTS

CHAIRMAN'S REPORT

FIRST THOUSAND DAYS

ECD CENTRES

LITERACY DEVELOPMENT

FINANCIALS

THANK YOU

CHAIRMAN'S REPORT

It is probably not untrue to say that COVID has impacted the life of every single person on planet earth. Perhaps the last time this happened was during the Second World War. I distinctly remember writing the same report last year when COVID had just begun and thinking that it would probably be over soon, yet here we are over a year later battling to roll out a comprehensive vaccination programme in our country.

It is also difficult to really understand the impact that this virus has had on the children within the projects that Kamvalethu supports. For many, 2020 would have been a write-off, at least from an educational perspective, as most would not have had access to computers that have allowed many privileged schools to continue teaching.

However, as you read through this annual report you will notice that the incredible members of these projects are, not unlike the health workers in our country, on the frontline of providing services to their children. Kamvalethu worked alongside these projects in realigning our funding towards COVID initiatives, as well as released additional funding for other interventions. The remarkable effort and sacrifice of our Project Partners should not be underestimated.

One of the undoubted highlights was the Maitri Trust in Edinburgh, Scotland, co-funding our COVID initiatives to the tune of R2 million. This amazing donation allowed us to make further plans with our project partners to deliver food parcels and much needed other resources to these rural communities.

Over the course of the last two years Kamvalethu has been an active part of Nation Builder, to develop an Impact

Management Reporting Guideline for funders and NPOs in South Africa. Over 100 social investors and NPOs, throughout 3 provinces, took part in the creation of this exciting guideline. When the guideline was launched with over 250 people in attendance, Kamvalethu was selected as one of the standout case study included in the report for our Outcomes Based Funding. This quote by Meyer Conradie, Founder/ CEO, Mosaic, made us proud - "Kamvalethu's story had the biggest impact, I love how they took a corporate principle and aligned it to NPO standards". As with so much else that happens in Kamvalethu, our Programme Director, Lauren McGill, led the charge.

While we move into a new financial year with the COVID cloud still over our heads and recognise the marked impact it has had and will continue to have on the businesses and individuals that support us, we are still confident that we have a sustainable business model. We are grateful for the continued sacrifice that many make in supporting Kamvalethu, and covet your prayers over our Project Partners, the children they uplift, and the businesses and people that provide.

Rowan Haarhoff CHAIRMAN
B.A. LLB (UCT), B.Th. (UP), Lic.Th.(CTBS)



Bulungula Incubator, ECD@Home



Bulungula Incubator, ECD@Home



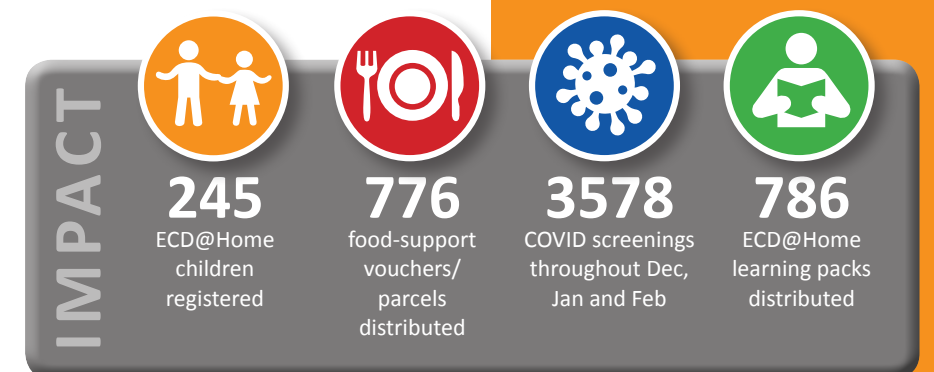
Bulungula Incubator, ECD@Home

FIRST THOUSAND DAYS

BULUNGULA INCUBATOR

Bulungula Incubator's mission is to be a catalyst in the creation of vibrant and sustainable rural communities. They work with community members from conception to career, with an integrated development strategy in education, health and nutrition, as well as sustainable livelihoods. All of the projects are designed, prioritised, implemented and managed in partnership with the community and through traditional and elected leadership structures. Bulungula Incubator provides Early Childhood Development services in the form of twice-weekly village-based playgroups and an ECD@Home programme.

The 0-3 ECD programme was significantly impacted by the COVID-19 crisis in 2020. Bulungula Incubator, like other community-based organisations, had to pivot to respond to the needs demanded by the unfolding crisis. Because the organisation is so deeply embedded in its communities, it could be flexible and adapt resources to provide what was needed most by the community during this very tough year. Some of these interventions ranged from a safe house, education about the virus, ensuring nutritional and food security, as well as some home-learning support. Education programmes slowly resumed in August. There were continued challenges through the remainder of 2020 while returning to full target, as the Home-based Care team had to prioritise COVID screening and support activities.



Pivoting to COVID-19 needs within the community

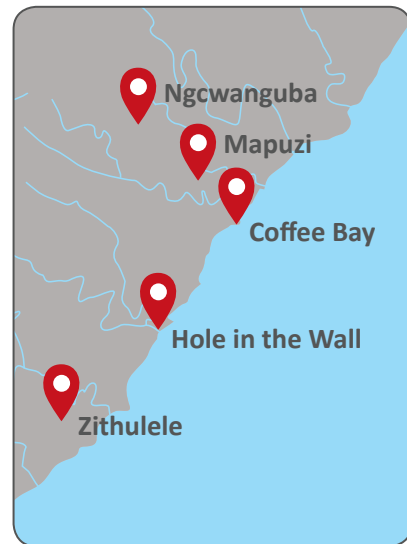


Bulungula Incubator, ECD@Home

"The home-learning was very good and important for the children. Since we were unable to come to school during lockdown, we needed to make a plan to still teach our learners, while keeping safe and healthy. The home learning was still fun for the kids, and engaged them even without being at school. The parents also appreciated that we made efforts to offer schooling during this challenging time. it showed our commitment to their children."

Ncumisa Bonakele, Jujurha Preschool Teacher & ECD@Home Learning Champion

THE WILD COAST MONTESSORI NETWORK



This initiative is a collaboration between Kamvalethu and First Children. It aims to bring together the grassroots Montessori preschools on the Wild Coast to learn and grow together.

Work began in February 2020 with the appointment of a local co-ordinator and establishment of a small office. The first school visits, teacher workshop and parent education meeting were held. However, due to the national closure of the schools in March as a result of COVID-19, most of the scheduled activities for 2020 could subsequently not take place. After identifying an immediate and desperate need for food supplies for the homes of the children who could not receive their usual meals at the preschools, the focus of the network's organisation had to swiftly

shift to providing monthly food and hygiene supplies to the families.

Kamvalethu and First Children repurposed finances for this in May and June. Additional funding was made available through Kamvalethu from the UK-based Maitri Trust, to make this possible for a further six months. Activities for the children-at-home were also designed collaboratively by teachers from the schools, and parents were given demonstrations and guidance in practical ways to carry out these activities. Even though 2020 looked nothing like anyone thought it would, there were still great positives. The reputation of the network within the communities grew as a group who genuinely care for the people and are there to support them during a tough time.



A child enjoying one of the activities by making pictures from objects discovered in nature



Older boys using their skills to make a kite from sticks and paper, while a younger child learns through observation



Food parcel distribution



IKHAYA LABANTWANA MONTESSORI



Parents of new learners receiving a briefing from ILM staff



Graduating class of 2020



A teacher helping a learner

ZITHULELE MONTESSORI PRESCHOOL



Food parcels and booklets being picked up by grateful parents at the Preschool

"We managed to teach our children at home, thanks to the books you gave us. It made a huge difference. We are very grateful for the support. We didn't know what to do before and it made things easier."

Ntombizanele, Parent



Children complete activity booklets at home in their backyard during lockdown

NCINCI ONE'S MONTESSORI



Mamas were most grateful for the food and health parcels



The Hundred Board

"Collecting the food parcels was easy and free. It helped me in my life and it made the children happy to receive activities to play with at home."

Nikelwa, Cook, Ncinci One's

EJOJWENI PRESCHOOL



Threading beads

"Kamvalethu made a great job. It gave you power to care for the nation, now parents are still interested with our school. You sacrificed during the hard time and I thank you for your support. May God bless you and give you more strength."

Nwabisa Mneca, Parent, Ejojweni Montessori Preschool



The children washed the cloths after their activity

NGOKO PRESCHOOL



Children building concentration

"I thank Kamvalethu for the story books that were given to parents to read for their children and activity books also."

Zukiswa Mtyana, Parent, Ngoko Preschool

"Our children are not forgotten anything as if the schools were not closed. Food parcels helped our children to be healthy even during Covid - thank you!"

Thabisa Tyingolwana, Parent, Ngoko Preschool



Learning to carry a chair

LITERACY DEVELOPMENT



ZITHULELE COMMUNITY LIBRARY

The Zithulele Community Library, iKhaya Lencwadi (Home of the Books), was opened by the Jabulani Rural Health Foundation in October 2011. It was soon discovered that changing peoples' minds about reading and literacy was not as easy as originally thought. Literacy levels in the area are not high but over the years, through consistent hard work, significant changes in interest in literature of all types has gradually been observed.



Walking the hills for home visits. Ayanda Parafini, our Literacy Promoter from the library, doing home visits to hand out stationery and activity packs to learners during lockdown



Shining bright. The 15 Librarian Stars eagerly receiving their certificates and boxes of mini libraries to take home with them



The main area before the renovations

The content of the library has slowly been built up, however, the team did not have the capacity or the skills to improve the actual facility, despite knowing that the facility itself could contribute to the creative influence on the learners engaging within its walls. While appreciating what they had, the rather dark room, with slightly sad looking bookshelves, very scuffed floor and leaky roof were not very inspiring. This year, due to the



The main area after the renovations

'slower traffic', the library space has been completely transformed through funding from Kamvalethu, the creative genius (and hard remote working!) of Make Play and the awesome team and volunteers on the ground at Jabulani. It has been a true team effort. The learners are loving being in the new space and everyone who has walked past and stuck their heads in, has marvelled at the complete transformation that it has undergone.



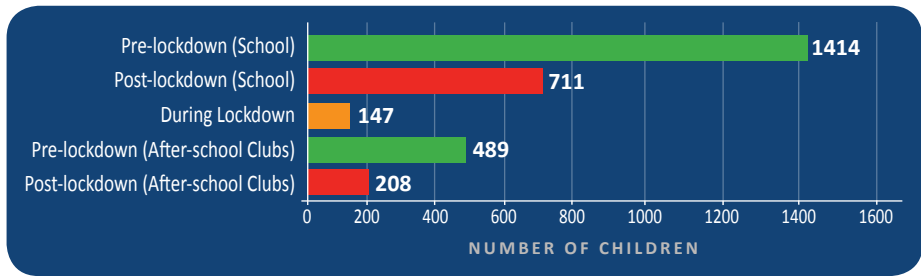
Storytime at home

AXIUM

As an organisation, throughout 2020 and 2021, Axiom has prioritised staff and student safety, while working on the principle of "attempt, analyse and adapt", as it has responded to the opportunities and challenges presented by COVID-19. A key piece of Axiom's work has been to combine its existing strategies with



creative, age-appropriate solutions to make remote or "hybrid" learning accessible for rural children. These strategies and solutions took the form of: informative school and home visits to raise awareness about COVID-19, producing simple literacy and numeracy activities and distributing these via WhatsApp and text message to parents and caregivers, distributing home-learning resource packs and adapting the programme model to run mini literacy and numeracy clubs.



As schools have opened up, the team has enthusiastically resumed its Teaching at the Right Level literacy work in school and much to the excitement of the learners, the school was able to open up its normal 'bigger' after-school clubs. Unfortunately, we have seen a dramatic drop off in attendance levels of our school and after school clubs.



Nobalisa working with children at home

THE OTTO FOUNDATION

On 12 November 2020, the Protea Library at Walmer Estate Primary School was officially opened by WC Premier, Alan Winde. This is the second library that the foundation has developed in partnership with The Kamvalethu Foundation, to serve schools in the District Six area in Cape Town.

The Otto Foundation aims to improve early literacy by improving access to books and nurturing a love of reading. It also strongly believes that physical spaces send a message to those who use them. Great care is taken to ensure that the design



Librarians and Otto staff

and layout of the libraries tell learners that they are valued, they are important, their stories and thoughts matter, and that it is worth investing in their success. Under the leadership of Literacy Director, Nonikiwe Mashologu, The Otto Foundation

continues to expand the school's library catalogues, ensuring that the books are representative of the lived experiences of learners who read them and are varied enough to expand the knowledge and worldview of learners.

In 2020, an additional 774 books were added to Liyabona Library (the total catalogue reached 4278 in December) and more than 3000 books were ready to be added to the Protea Library's shelves. The foundation looks forward to seeing the impact that Protea Library is going to have on learning outcomes at Walmer Estate Primary School.



Alan Winde opening the Protea Library

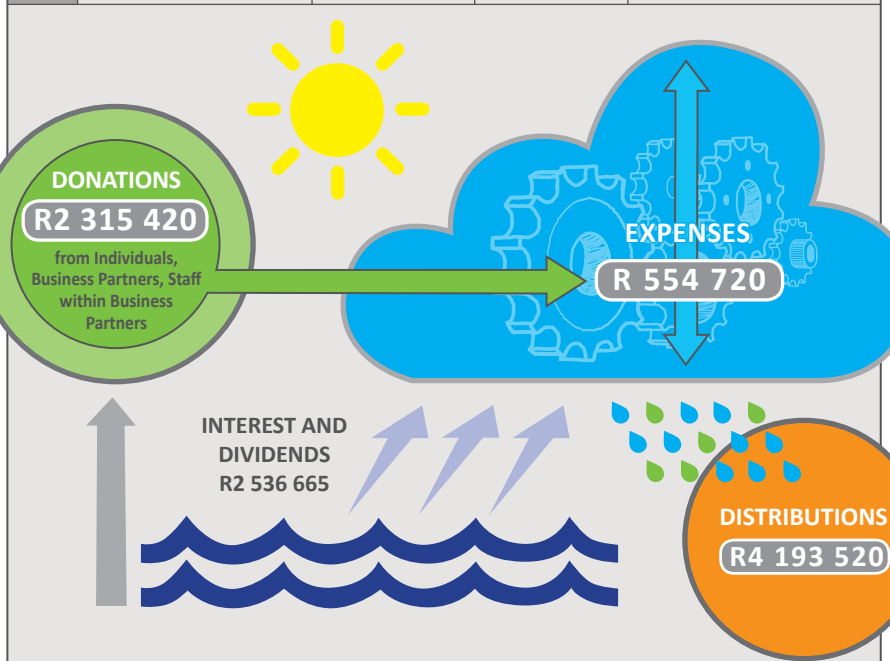
"The library is contributing to a positive school environment. Educators believe in the importance of information literacy as well as reading for pleasure. We are getting very good feedback from teachers with regard to improvement in reading skills and participation in classroom discussions."

Zeena Abrahams, Librarian, the Protea Library



Protea class

		FY 2021	FY 2020	NOTE
IN	Donations received	*R 2 315 420	R 339 837	*Maitri Trust donation of R 2 141 520 is included
	Dividends and interest earned	R 2 536 665	R 2 237 518	
OUT	TOTAL	R 4 852 085	R 2 577 355	88.25% increase
	Expenses paid	R 554 720	R 438 071	26% increase
	Distributions made	*R 4 193 520	R 1 885 465	122% increase



FINANCIALS

The Kamvalethu Foundation Trust (Registration Number IT1928/2013)
For the 12 months ended 28 February 2021

INCOME	
Donations Received: Individuals	R 41 100
Donations Received: Maitri Trust	R 2 141 520
Donations Received: Business	R 131 000
Donations Received: MySchool	R 1 800
Dividends Received: Business	R 2 175 000
Other Income	R 282 856
Interest Received	R 78 809
Total Income	R 4 852 085
OPERATING EXPENSES	
Accounting, Bank, Legal and Management Fees	R 60 004
Employee Costs (incl. payroll, salaries, training)	R 438 249
Office Expenses	R 17 677
Marketing and Events	R 33 529
Resources	R 5 020
Entertainment	R 240
TOTAL OPERATING EXPENSES	R 554 720
OPERATING PROFIT	R 2 155 845
NON-OPERATING EXPENSES	
Distributions to Beneficiaries	R 2 052 000
Donations	R 2 141 520
Net Profit	R 103 845
The above is based on unaudited figures.	

THANK YOU TO OUR PARTNERS

It is our privilege to partner with amazing businesses and the individuals who work for them. We consider you to be an integral part of The Kamvalethu Foundation. We appreciate not only your financial contribution, but your generosity of spirit and support over the past year. A special thank you to Damian Will, Lark-Hee Choi, Tanna Arnold and Allan Gibbon for consistently going above and beyond in helping us! Thank you to Lynne Snell for assisting us with the proofreading and to the Kamvalethu Board for always having the beneficiaries' best interests at heart. Finally, a big thank you to our awesome Project Partners, without whom none of this would be possible! Your passion, dedication and determination inspire us!



Office 4, Office On The Beach, 3 Lagoon Beach Drive, Milnerton, Cape Town, 7441

Office: 021 551 4609 | Email: partner@kamvalethu.org | kamvalethu.org